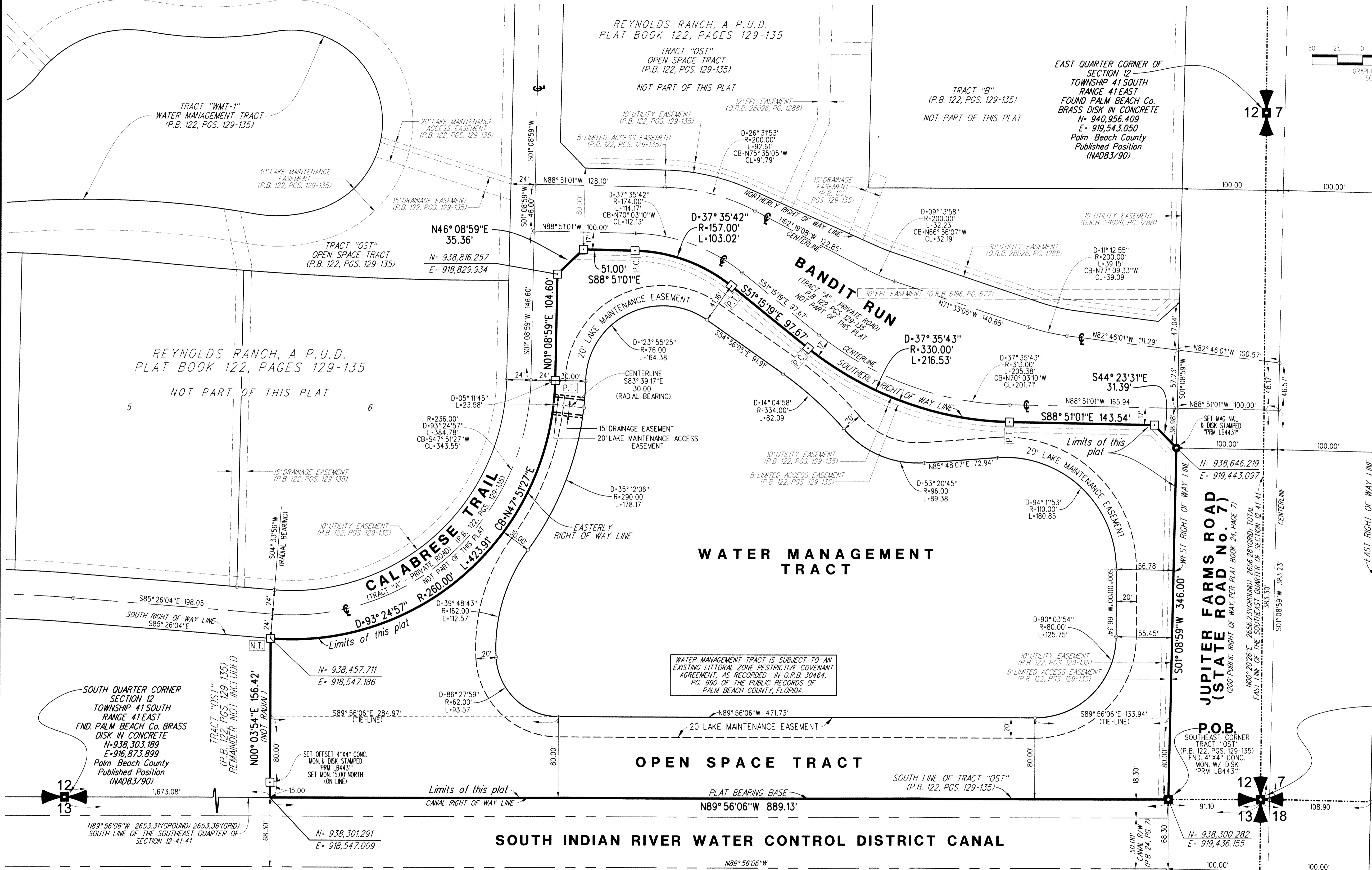
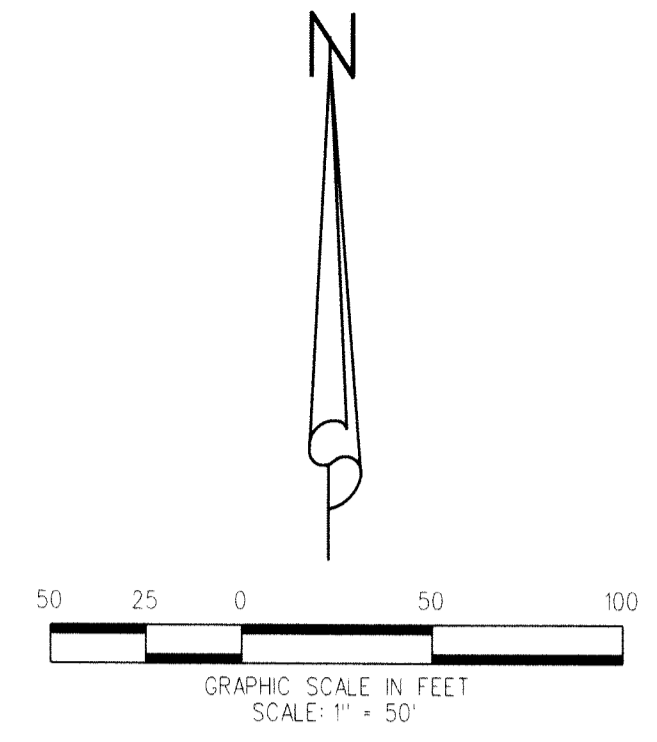


REYNOLDS RANCH REPLAT No. 1, A P.U.D.

BEING A REPLAT OF A PORTION OF TRACT "OST", AS SHOWN ON REYNOLDS RANCH, A P.U.D.
 RECORDED IN PLAT BOOK 122, PAGES 129 THROUGH 135, PUBLIC RECORDS OF PALM BEACH COUNTY, FLORIDA,
 LYING IN SECTION 12, TOWNSHIP 41 SOUTH, RANGE 41 EAST,
 PALM BEACH COUNTY, FLORIDA

99

SHEET 2 OF 2



PLAT POSITION AND ORIENTATION:

- COORDINATES SHOWN HEREON ARE GRID AND ARE BASED ON THE NATIONAL GEODETIC SURVEY, FLORIDA STATE PLANE TRANSVERSE MERCATOR PROJECTION
- DISTANCES SHOWN HEREON ARE GROUND DISTANCES UNLESS OTHERWISE NOTED.
- DATUM = NORTH AMERICAN DATUM OF 1983 (NAD83), 1990 ADJUSTMENT
- ZONE = FLORIDA EAST
- LINEAR UNITS = US SURVEY FOOT
- SCALE FACTOR = 1.000019101
- GROUND DISTANCES X SCALE FACTOR = GRID DISTANCE

ABBREVIATIONS:

- CB = CHORD BEARING
- CL = CHORD LENGTH
- Δ = DELTA
- L = ARC LENGTH
- L.A.E. = LIMITED ACCESS EASEMENT
- L.M.A.E. = LAKE MAINTENANCE ACCESS EASEMENT
- O.R.B. = OFFICIAL RECORD BOOK
- P.B. = PLAT BOOK
- PG. = PAGE
- P.O.B. = POINT OF BEGINNING
- P.O.C. = POINT OF COMMENCEMENT
- P.R.M. = PERMANENT REFERENCE MONUMENT
- P.S.M. = PROFESSIONAL SURVEYOR AND MAPPER
- P.U.D. = PLANNED UNIT DEVELOPMENT
- R = RADIUS
- S.E. = SOUTHEAST
- S.S.E. = SAFE SIGHT EASEMENT
- S.W. = SOUTHWEST
- U.E. = UTILITY EASEMENT
- P.C. = POINT OF CURVATURE
- P.T. = POINT OF TANGENCY
- N.T. = NON-TANGENT

LEGEND:

- ◻ = DENOTES PERMANENT REFERENCE MONUMENT (P.R.M.) SET 4"X4" CONCRETE MONUMENT WITH DISK STAMPED "PRM LB4431" UNLESS OTHERWISE NOTED
- ⊕ = DENOTES CENTERLINE
- ⊕ = DENOTES CHANGE IN DIRECTION

SITE DATA
 PLAT CONTROL NUMBER: 1974-00175

LIDBERG LAND SURVEYING, INC.
 675 West Indiantown Road, Suite 200, Jupiter, Florida 33458 TEL: 561-746-8454

| | | | |
|------|----------------------------------------------------------|-------|-----------------------|
| CAD: | K:\JUST \ 12411 \ 13-045 \ 13-0450-306 \ 13-0450-306.DGN | | |
| REF: | | | |
| FLD. | PG. | JOB | 13-0450-306 |
| OFF. | CASASUS | DATE | JANUARY 2020 |
| CKD. | D.C.L. | SHEET | 2 OF 2 DWG. D13-045PP |

THIS INSTRUMENT WAS PREPARED BY ERIC CASASUS P.S.M., IN AND FOR THE OFFICES OF LIDBERG LAND SURVEYING, INC., 675 WEST INDIANTOWN ROAD, SUITE 200, JUPITER, FLORIDA 33458. TELEPHONE 1561-746-8454.